

MONTHLY MEMBERSHIP PROGRESS REPORT

LOCATION INDIA

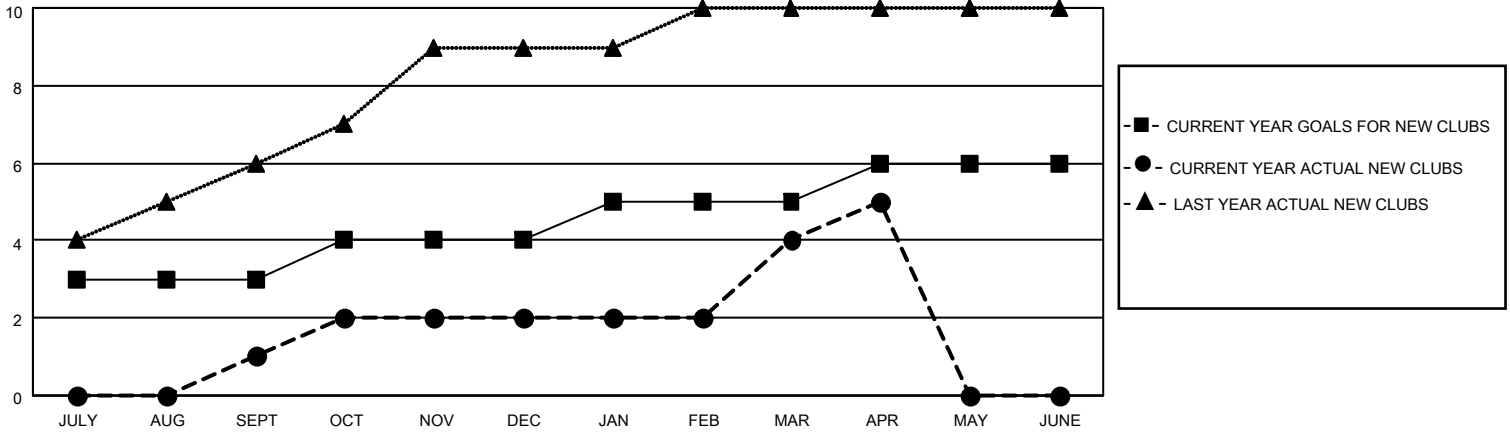
District 322 B2

Results as of: 4/30/2023

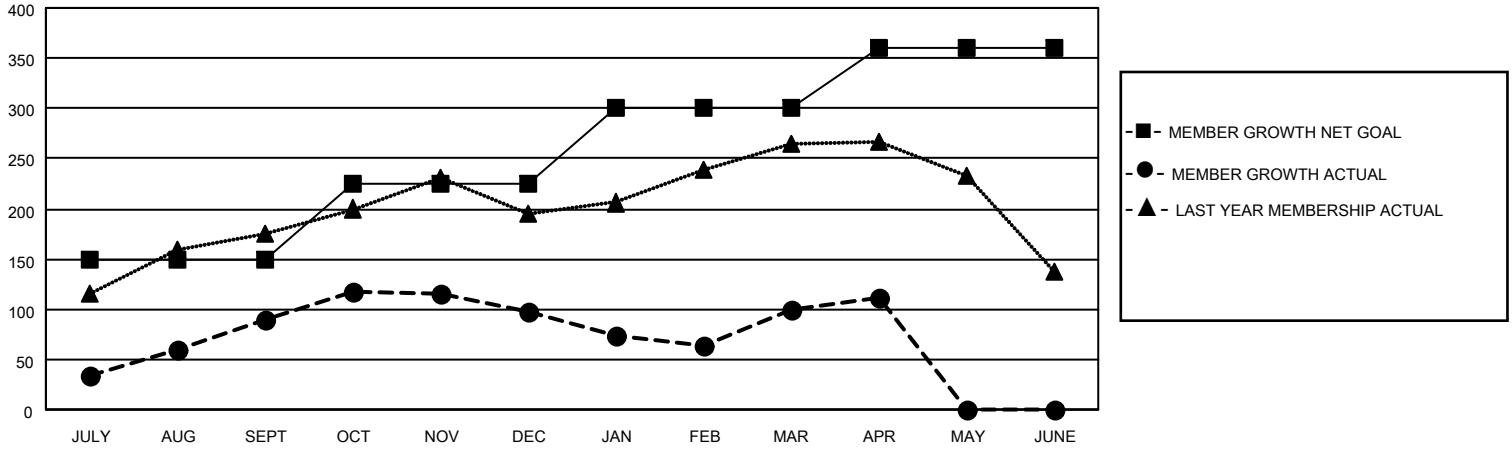
Clubs			
RESULTS FOR 2022-2023			
QUARTER	NEW CLUB GOAL	NEW CLUBS	DROPPED CLUBS
JULY/AUG/SEPT	3	1	0
OCT/NOV/DEC	1	1	6
JAN/FEB/MAR	1	2	3
APR/MAY/JUNE	1	1	0

Members			
RESULTS FOR 2022-2023			
QUARTER	MEMBER GROWTH NET GOAL	MEMBER GROWTH ACTUAL	DROPPED MEMBERS ACTUAL (including transfers)
JULY/AUG/SEPT	150	132	34
OCT/NOV/DEC	75	115	106
JAN/FEB/MAR	75	82	72
APR/MAY/JUNE	60	28	16

GOALS AND ACTUAL NEW CLUBS CUMULATIVE



GOALS AND ACTUAL MEMBERS CUMULATIVE



DROPPED CLUBS: 9

39 CLUBS OF 95 ADDED 1 OR MORE NEW MEMBERS

GENDER DISTRIBUTION

MALE	2,132 (69.83%)
FEMALE	921 (30.17%)
NON BINARY	0 (0.00%)
PREFER NOT TO ANSWER	0 (0.00%)

DROPPED MEMBERS

[CLICK HERE FOR CUMULATIVE MEMBERSHIP DATA](#)

DECEASED	6
CLUB CANCELLED	121
OTHER	101
TOTAL	228

TOTAL FAMILY UNIT MEMBERS 1,597

FAMILY MEMBERS PAYING HALF DUES 1,009